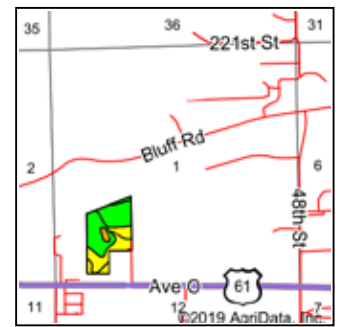
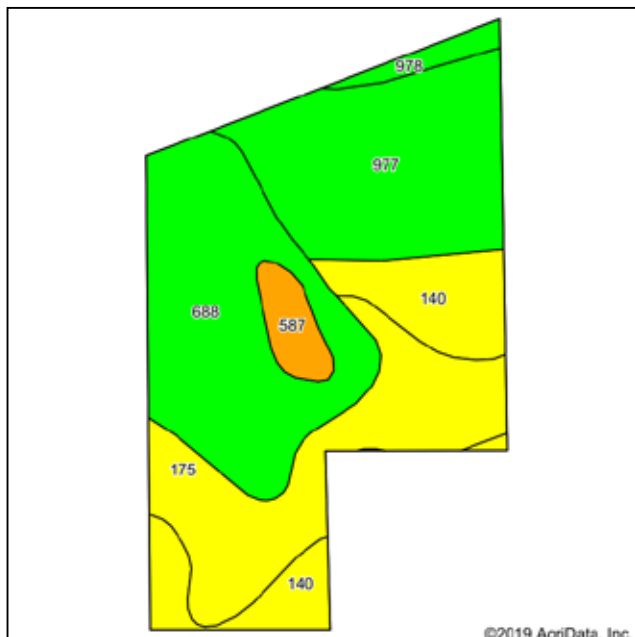


FOR SALE

Lee County, Iowa

1 TRACT
30
 ACRES+/-
 subject to survey



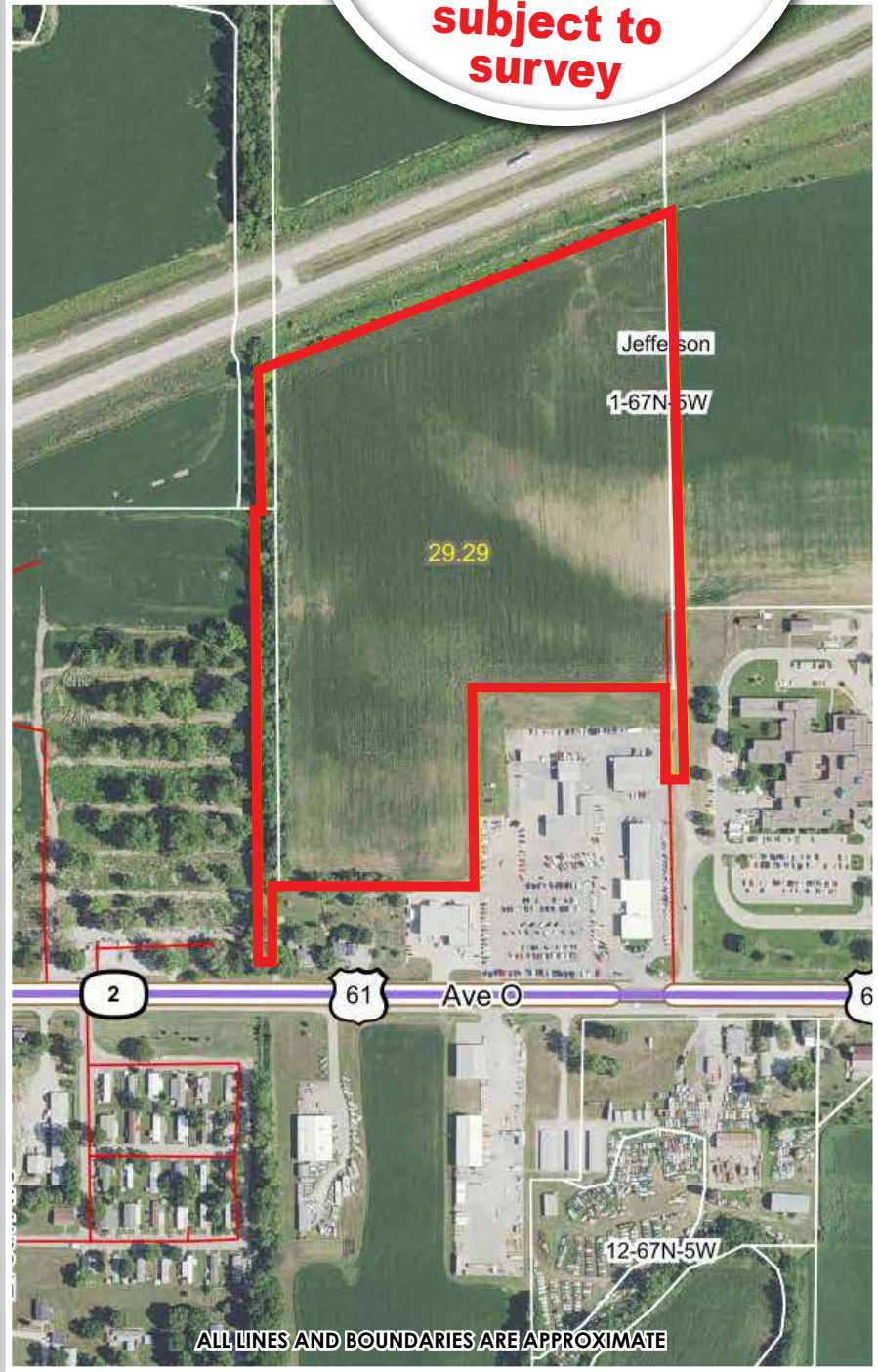
State: Iowa
 County: Lee
 Location: 1-67N-5W
 Township: Jefferson
 Acres: 27.12
 Date: 10/11/2019



Area Symbol: IA111, Soil Area Version: 26

Code	Soil Description	Acres	Percent of field	CSR2 Legend	Non-Irr Class *c	Irr Class *c	CSR2**	CSR
688	Kozta silt loam, 0 to 2 percent slopes, rarely flooded	8.30	30.6%	Green		lw	89	85
977	Richwood silt loam, 0 to 2 percent slopes	7.19	26.5%	Green		l	100	95
175	Dickinson fine sandy loam, 0 to 2 percent slopes	6.16	22.7%	Yellow		lls	56	60
140	Sparta loamy sand, thick surface, 0 to 2 percent slopes	3.97	14.6%	Yellow		lvs	42	43
587	Chequest silty clay loam, 0 to 2 percent slopes	0.93	3.4%	Orange		llw	66	65
978	Festina silt loam, 1 to 3 percent slopes	0.57	2.1%	Green			90	90
Weighted Average							76.8	75.2

**IA has updated the CSR values for each county to CSR2.
 *c: Using Capabilities Class Dominant Condition Aggregation Method
 Soils data provided by USDA and NRCS.



Terry Hoenic - Sales Representative
 319.470.7120, cell | Terry.Hoenig@SteffesGroup.com



SteffesGroup.com

Steffes Group, Inc., 2245 East Bluegrass Road, Mt. Pleasant, IA 52641 | 319.385.2000

